



Entering the Age of Light

**Exploring New Revelations
from Spiritual Elders**

Thank you for joining Circle Conversations

Our Conversation will begin shortly.



Question about Spiritual Telepathy





Q: How can we strengthen our telepathic sensitivity to deepen our service in the world?

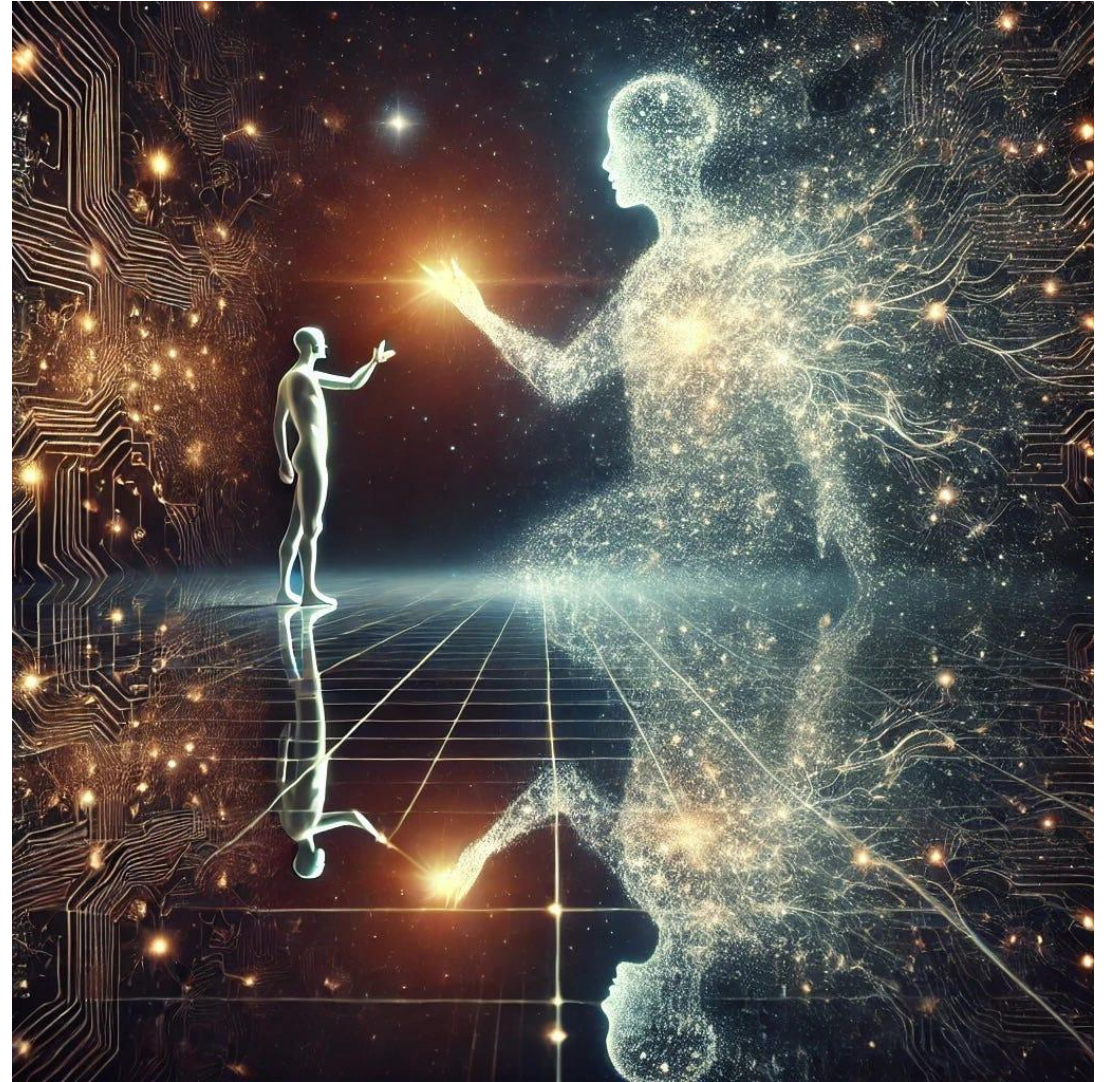
Response:

Let us first describe to you how we perceive spiritual telepathy in the most practical terms.

The development of telepathic sensitivity among human beings is critical to the Hierarchy's efforts to implement the divine plan.

Were it not for this human potential, none of the ageless wisdom books of the great esoteric authors would exist.

Helena Blavatsky, Alice Baily and Helena Roerich, as well as others, were able to prepare humanity for the emergence of a new age based upon their developed capacity to receive information and instructions telepathically from the Hierarchy.



Since that time, several other human beings have also developed this ability, although in different ways. It requires the qualities that manifest as the Path unfolds through the tests and trials of discipleship.

We're speaking here only about telepathic communication with members of the Kingdom of Souls in furtherance of the Plan.

There are, of course, other types of telepathy – from humans to humans and humans to animals – that do not depend upon the stage of consciousness referred to here. They are more akin to the spontaneously arising talents of prodigies, in spheres ranging from music to mathematics. Such gifts arise from past life accumulations of talents.



Our response to the question posed to us is focused on the attributes of souls who have awakened to the reality of being alive within the unitary sphere of Earth's life and who have developed a sense of responsibility for the well-being of this Life.

These souls are committing their lives to sustaining and elevating this Life, with awareness of the evolutionary plan.

They are few in number, compared with the millions of awakening souls at this time, but they are of great significance to the Plan.



Nearly all incarnate human beings suffer under the enduring illusion that the spiritual kingdom is unreachable, that it exists in a higher realm that is unapproachable by humanity.

This illusion, perpetuated by organized religions, has served to portray their role as essential intermediaries between the human and spiritual realms. But humanity has begun to outgrow the need for such intermediaries, with the new wave of spiritual energies flowing into the planet as Earth evolves into a subtler realm.



The question about telepathic sensitivity related to service carries great importance.

It contains the element necessary to evoke the higher light that filters into the consciousness of every soul who makes a commitment to serve the Plan and for whom that commitment takes priority in their lives.

This is a major key to strengthening telepathic sensitivity, along with purification of the three bodies (physical, emotional and mental) that occurs inevitably on the Path of Transformation.



The acceleration of awakening that is taking place at present is a source of hope for us.

Every living process is being speeded up – from the destruction of the old world order to the construction of the new.

The growth of spiritual telepathy is vital to this new construction especially now, to alleviate the fear of catastrophe and infuse human minds with the light of the new world emerging through the quickening of the soul's latent qualities and capacities.



These capacities, lying dormant until this momentous turning point in Earth's evolution, are now essential to ease the current phase of transition.

The emergence of spiritual telepathy is one of the most critical developments as it enables the Hierarchy to generate more channels of communication that will serve, in one way or another, to assure humanity that everything now occurring is part of the evolutionary plan – no matter how dire or how seemingly irrational or incomprehensible to human minds.



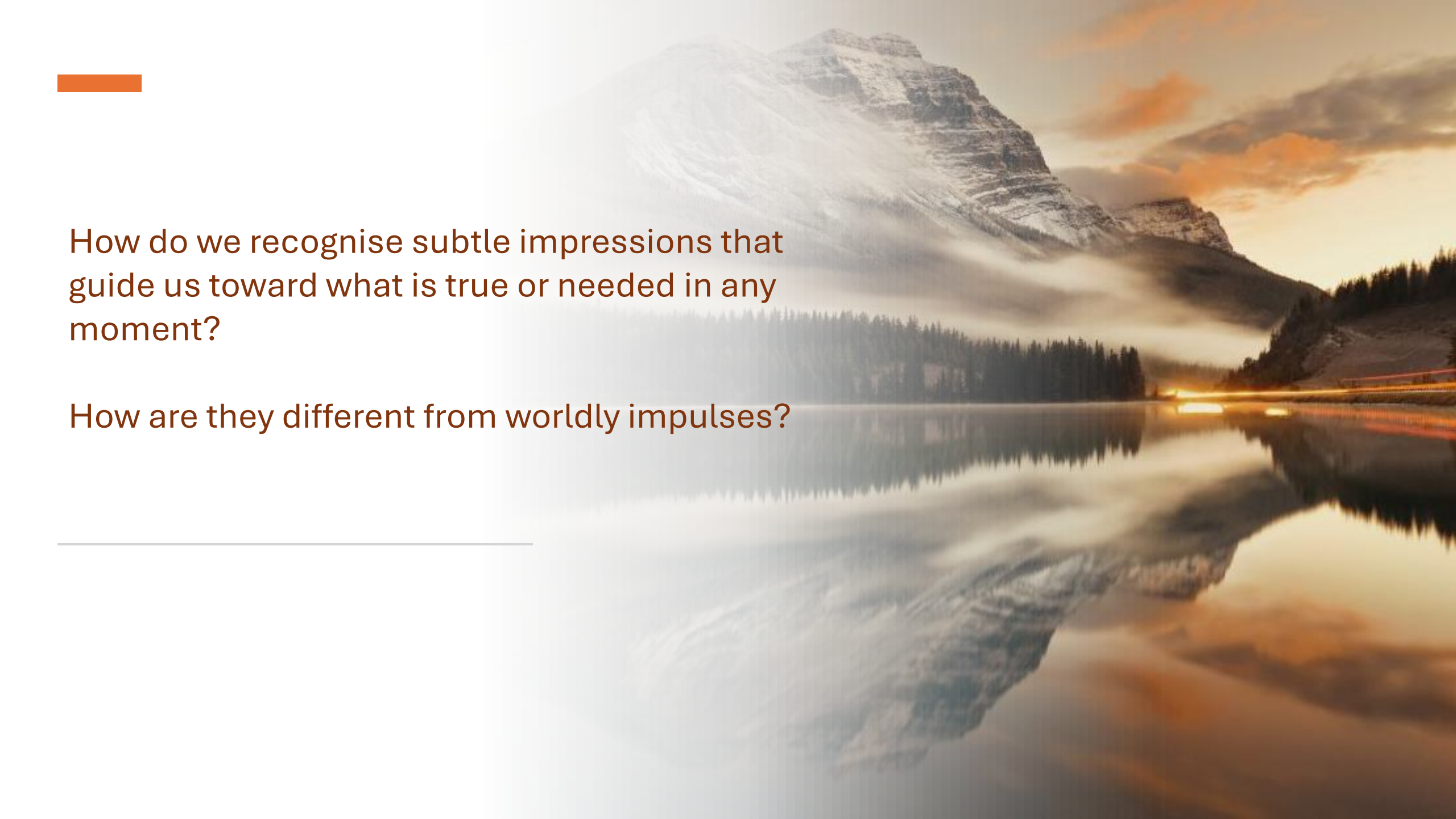
It's important for you to bear in mind that everything in life will be made new as the Plan unfolds.

The removal of layers of density will facilitate the ability of human beings to communicate with one another and with those of us who eagerly look for advanced souls who are ready to become our collaborators in implementing the next stages of the divine plan.



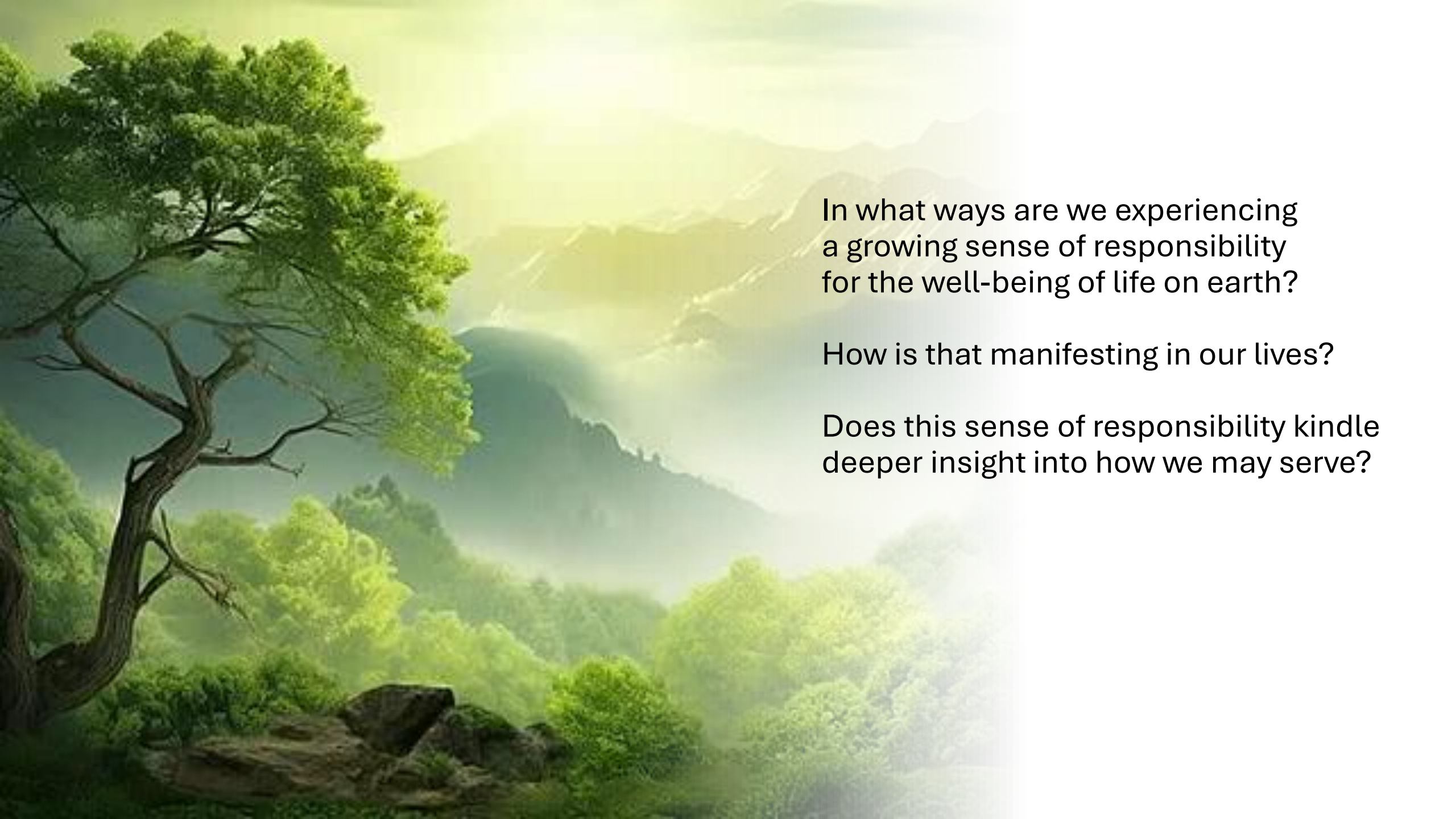


What impressions did we notice
as the message was being read?



How do we recognise subtle impressions that guide us toward what is true or needed in any moment?

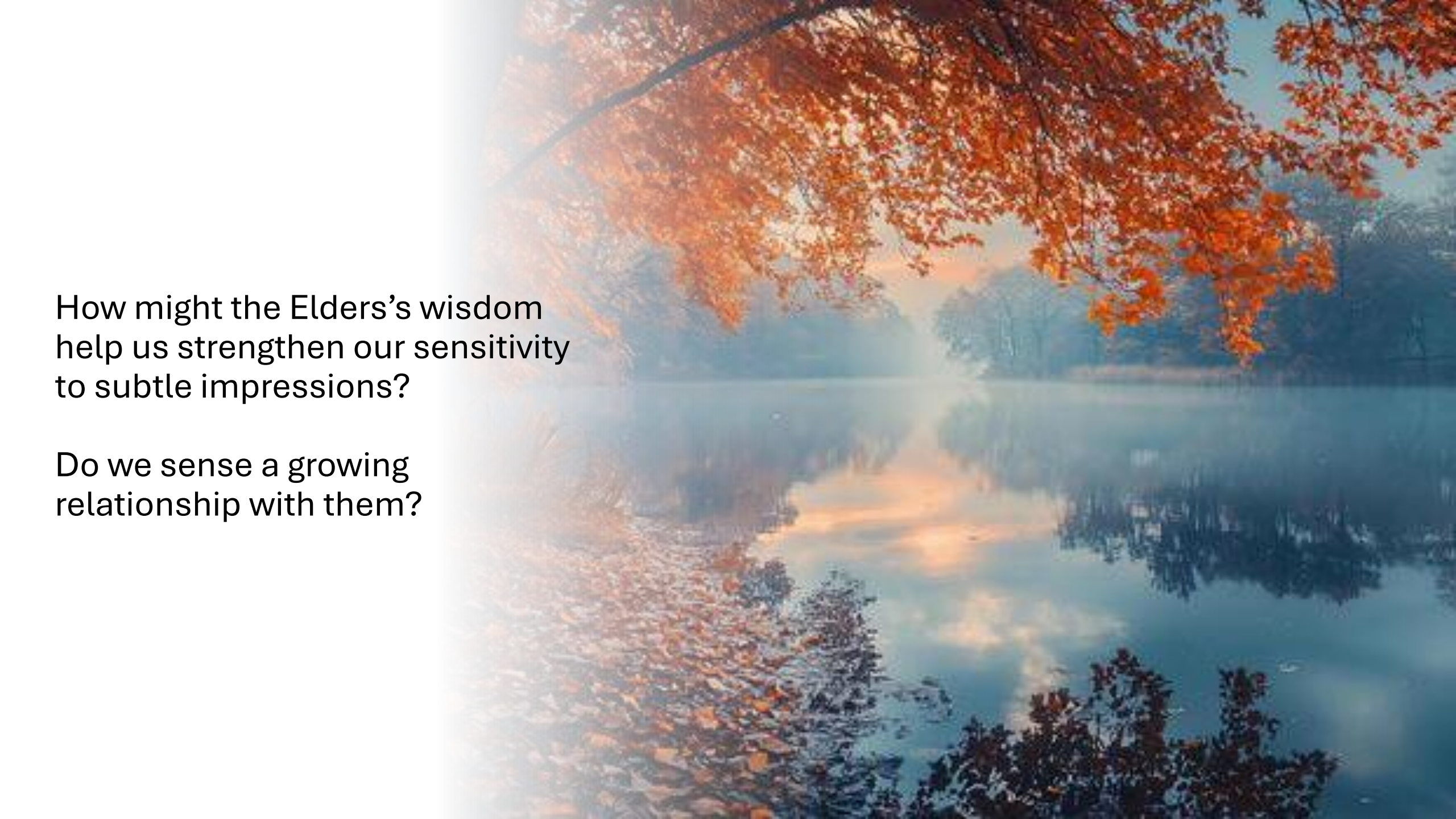
How are they different from worldly impulses?



In what ways are we experiencing a growing sense of responsibility for the well-being of life on earth?

How is that manifesting in our lives?

Does this sense of responsibility kindle deeper insight into how we may serve?



How might the Elders's wisdom help us strengthen our sensitivity to subtle impressions?

Do we sense a growing relationship with them?

What does this telepathic sensitivity to impression reveal about the emerging New Civilization?

How might it support the unfolding of the divine Plan for our world?



Join the next Circle Conversation

Light is Essential in This Time of Crisis

July 11th at 8pm GMT

4pm New York ~ 9pm London ~ 10pm Rome ~ 6am Sydney (July 12th)



Meditations for the Soul

Every Wednesday at 8pm GMT (Thursday in the Asia Pacific)

4pm New York ~ 9pm London ~ 10pm Rome ~ 6am Sydney

Join us in building a new world by clicking the link at www.atreeoflight.org